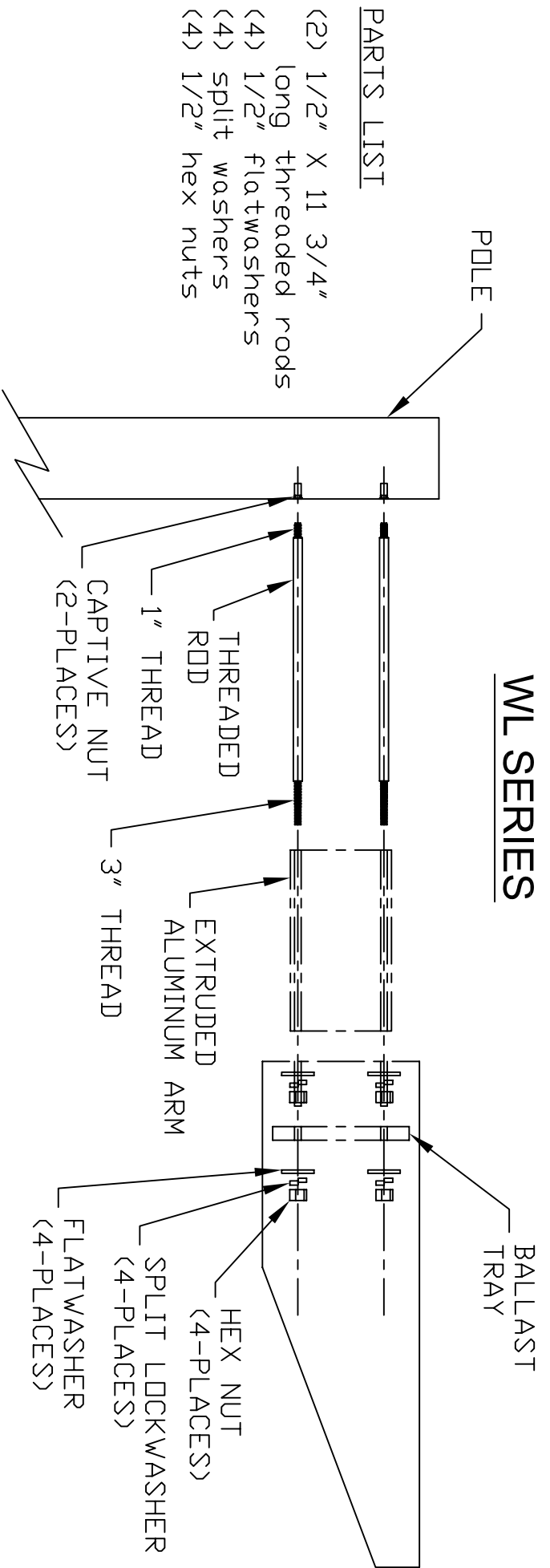
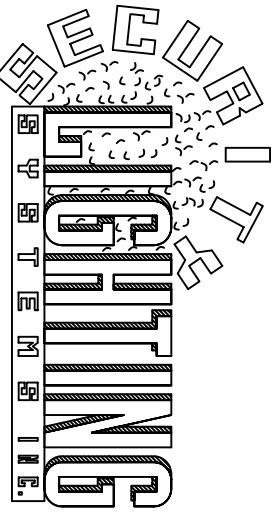


WL SERIES



1. **IMPORTANT NOTE:** Install rods (2) with 1" threaded side into pole and **TIGHTEN SECURELY.**
2. Slip extruded aluminum arm over rods thru carrying channels.
3. Slip fixture over rods and install onto each rod in the following order:
 - (1) flatwasher, (1) split lockwasher, (1) hex nut. **TIGHTEN SECURELY**
4. Pull Ballast supply wires through ballast tray prior to setting on rods.
5. Install ballast tray on same rods using, (1) flatwasher, (1) split lockwasher, (1) hex nut. **TIGHTEN SECURELY**
6. Make all electrical connections.
7. Close up ballast cover with (2) captive screws. **TIGHTEN SECURELY**
8. Check to see if lamp is **SECURELY TIGHTENED.**
9. Close up lens door frame assembly.

Rev. 6/2000



Performance Designed Lighting Products
1085 Johnson Dr. Buffalo Grove, Illinois 60089

Phone :847/279-0627

Fax :847/279-0642

CAUTION

Fixture is factory wired for 120 volts.
If voltage is 277V, 208V, or 240V,
change spade connection to proper voltage on ballast.