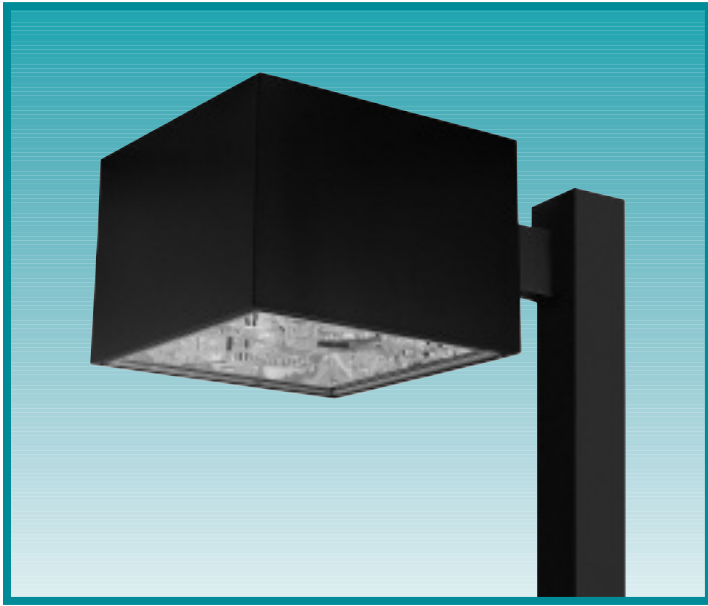


SIGNATURE SERIES

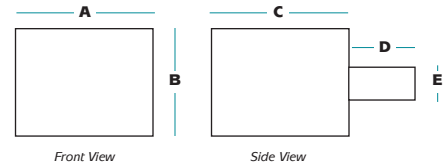


A universally styled lighting system that offers the aesthetic appeal of optional accent striping and high performance through a wide range of photometry that is sure to be architecturally pleasing in today's competitive marketplace. Ideally suited for automotive dealerships, restaurants, retail and other general outdoor area lighting applications.



Fixture Specifications

- One-piece formed aluminum housing with vertical lamp orientation
- Rotatable optics standard
- Easy access to lamp and ballast compartments
- Tempered clear glass lens or sag glass lens available
- Luminaire finished in weatherproof powder-coat paint
- Available with color band accent stripe
- Lamp and arm included
- UL listed for wet locations



A	B	C	D	E	EPA
21.0"	15.0"	21.0"	10.0"	5.0"	3.2

ORDERING INFORMATION

SAMPLE CATALOG NUMBER

SL **XXXXXXXX** **XX** **X** **X** **XX**

Series Wattage/Source Finish Distribution Lens Voltage

SERIES	
SL	Signature Series

WATTAGE/SOURCE ¹	
320PMH	320 watt pulse start metal halide
400PMH	400 watt pulse start metal halide
750PMH	750 watt pulse start metal halide
1000MH	1000 watt metal halide
400HPS	400 watt high pressure sodium
1000HPS	1000 watt high pressure sodium

FINISH ²	
DB	Dark Bronze
BK	Black
WH	White
PS	Platinum Silver

DISTRIBUTION	
F	Forward Throw
3	Type III
5	Type V

LENS	
F	Flat Glass
S	Sag Glass

VOLTAGE	
MT	Multi-Tap ballast (120, 208, 240, 277V)
48	480V

¹ Consult factory for other wattages and sources.

² Consult factory for other finishes. Specify optional color band finish.



A HUBBELL LIGHTING, INC. COMPANY

Performance Designed Lighting Products

1085 Johnson Drive • Buffalo Grove, IL 60089 • TOLL-FREE: 800-544-4848 • PHONE: 847-279-0627 • FAX: 847-279-0642

www.securitylighting.com