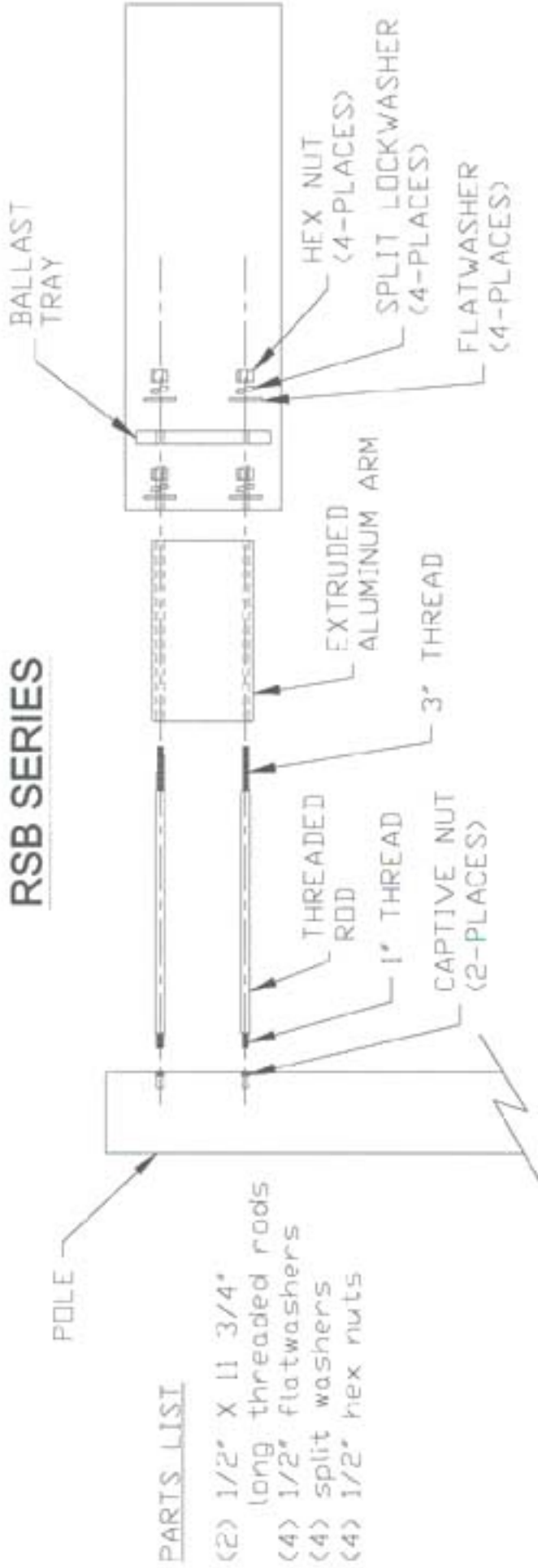


RSB SERIES



PARTS LIST

- (2) 1/2" X 11 3/4" long threaded rods
- (4) 1/2" flat washers
- (4) split washers
- (4) 1/2" hex nuts

1. IMPORTANT NOTE: Install rods (2) with 1" threaded side into pole and TIGHTEN SECURELY.
2. Slip extruded aluminum arm over rods thru carrying channels.
3. Slip fixture over rods and install onto each rod in the following order:
 - (1) flatwasher, (1) split lockwasher, (1) hex nut. TIGHTEN SECURELY
4. Pull Ballast supply wires through ballast tray prior to setting on rods.
5. Install ballast tray on same rods using. (1) flatwasher, (1) split lockwasher, (1) hex nut TIGHTEN SECURELY
6. Make all electrical connections.
7. Close up ballast cover with (2) captive screws. TIGHTEN SECURELY
8. Check to see if lamp is SECURELY TIGHTENED.
9. Close up lens door frame assembly.

TRIPLE LIGHTING

Performance Designed Lighting Products
1085 Johnson Dr. Buffalo Grove, Illinois 60089

Phone :847/279-0627 Fax :847/279-0642

CAUTION

Fixture is factory wired for 120 volts.
If voltage is 277V, 208V, or 240V,
change spade connection to proper voltage on ballast.