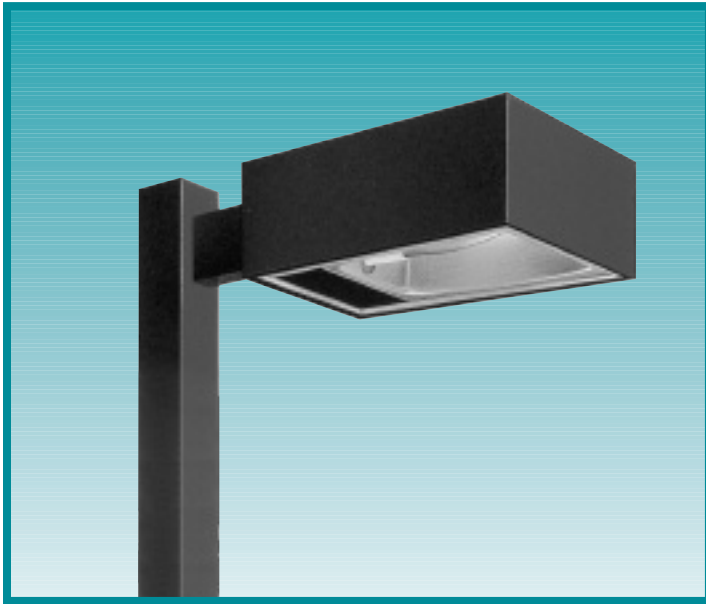


RSB-RCS/L SERIES

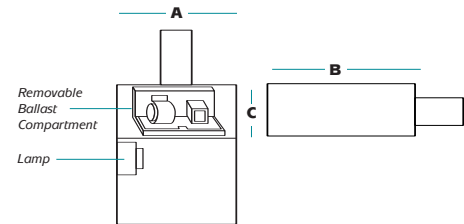


The RSB-RCS/L Series rectangular shoebox is offered in a variety of lighting distributions with sharp cutoff to meet the challenging demands of today's site lighting projects.



Fixture Specifications

- One-piece formed aluminum housing
- Hydroformed aluminum reflector
- Die cast zinc latches permit tool-free entry
- High power factor ballast with -20 °F starting
- Consult factory for glare shield options
- Lamp and arm included
- Flat tempered glass lens
- Luminaire finished in weatherproof powder-coat paint
- Available with photocell and polycarbonate shield
- Rotatable optics (RCL only)
- UL listed for wet locations



ORDERING INFORMATION

SAMPLE CATALOG NUMBER

RSB-RCX **XXXXXXXX** **XX** **X** **XX**

Series Wattage/Source Finish Distribution Voltage

SERIES

RSB-RCS RSB Series - Small
RSB-RCL RSB Series - Large

WATTAGE/SOURCE¹

100PMH 100 watt pulse start metal halide (RCS)
175PMH 175 watt pulse start metal halide (RCS)
250PMH 250 watt pulse start metal halide (RCS)
320PMH 320 watt pulse start metal halide (RCS/L)
1000MH 1000 watt metal halide (RCL)
100HPS 100 watt high pressure sodium (RCS)
150HPS 150 watt high pressure sodium (RCS)
250HPS 250 watt high pressure sodium (RCS)
400HPS 400 watt high pressure sodium (RCS/L)
1000HPS 1000 watt high pressure sodium (RCL)

FINISH²

DB Dark Bronze
BK Black
WH White
PS Platinum Silver

DISTRIBUTION

3 Type III
4 Type IV
5 Type V (square)

VOLTAGE

MT Multi-tap ballast (120, 208, 240, 277)
48 480 volt

¹ Consult factory for other wattages and Pulse Start availability.
² Consult factory for other finishes.

A	B	C	EPA	WEIGHT
RSB-RCS				
16.25"	23.5"	8.5"	2.1 ft ²	42 lbs.
RSB-RCL				
22.25"	30"	10.5"	3.0 ft ²	70 lbs.



A HUBBELL LIGHTING, INC. COMPANY

Performance Designed Lighting Products

www.securitylighting.com

1085 Johnson Drive • Buffalo Grove, IL 60089 • TOLL-FREE: 800-544-4848 • PHONE: 847-279-0627 • FAX: 847-279-0642