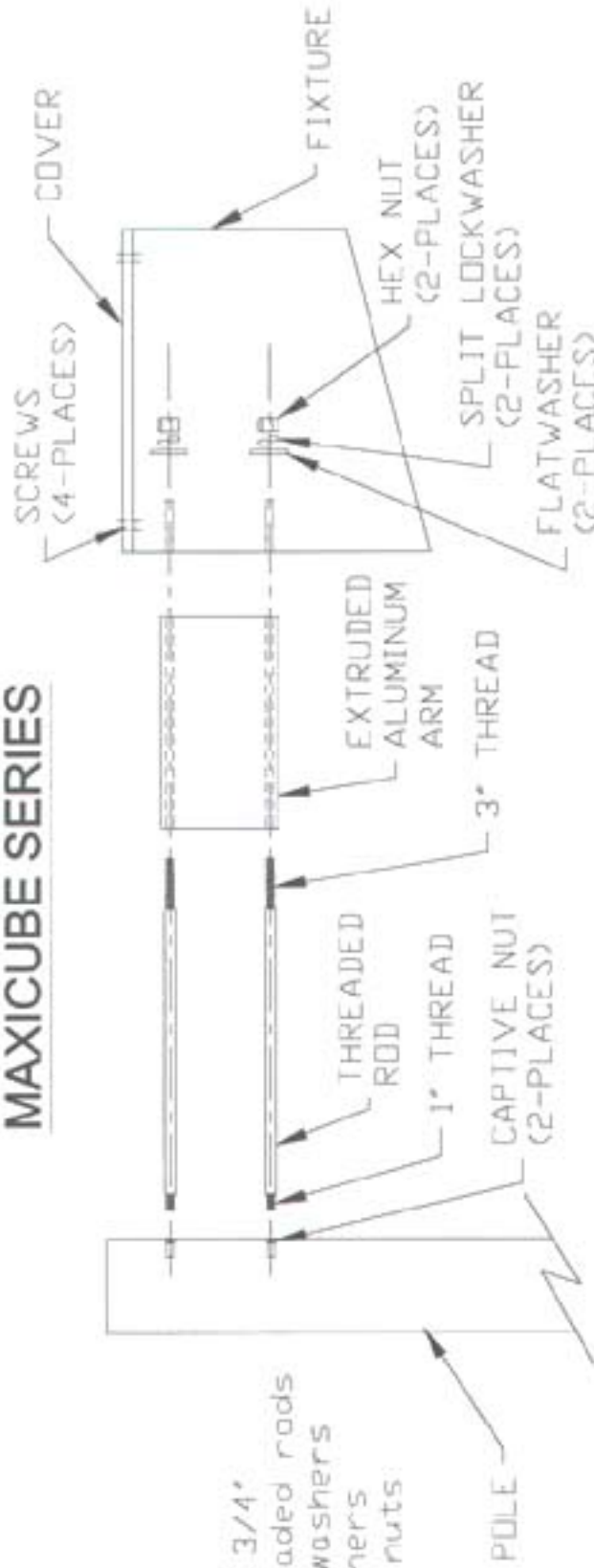


## MAXICUBE SERIES

### PARTS LIST

- (2) 1/2" X 11 3/4" long threaded rods
- (2) 1/2" flatwashers
- (2) split washers
- (2) 1/2" hex nuts



1. After removing fixture from carton, check to see that lamp is **SECURELY TIGHTENED**.
2. Unscrew top of fixture and remove cover.
3. **IMPORTANT NOTE:** install threaded rods (2) with 1" threaded side into pole and **TIGHTEN SECURELY**.
4. Slip arm over rods.
5. Pull ballast supply wires through back of fixture prior to setting on rods.
6. Slip fixture over rods and install onto each rod in this order: (1) flatwasher, (1) splitwasher, (1) hex nut. **TIGHTEN SECURELY**.
7. Make all electrical connections.
8. Screw cover back onto fixture and tighten screws securely.

**PERFORMANCE LIGHTING**

Performance Design Group, Lighting Products  
1085 Johnson Dr., Buffalo Grove, Illinois 60089

### CAUTION

Fixture is factory wired for 120 volts.  
If voltage is 277V, 208V, or 240V,  
change spade connection to proper voltage on ballast.

Phone (847)275-0627

Fax (847)279-0642