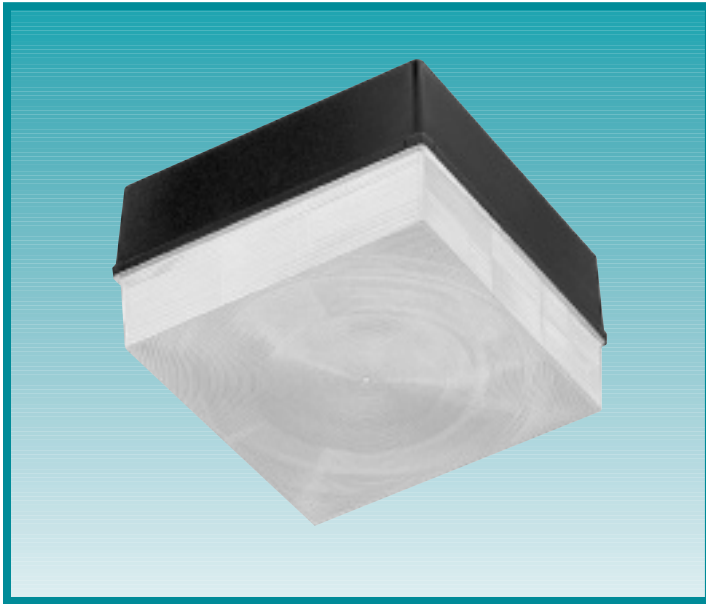


# LUMASQUARE®



The Lumasquare® Series offers an aesthetically styled architectural luminaire with superior performance designed for indoor and outdoor lighting applications. The rugged die-cast housing is designed for lasting beauty and strength. The vertical burning lamp, which is positioned within a specular reflector, achieves maximum efficiency. This luminaire is ideal for building eaves, canopies, parking garages, or any application where an attractive, high-performance fixture is required.

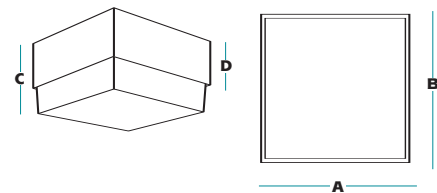


## Fixture Specifications

### FEATURES

- Rugged die cast housing
- Two .5" side hubs for surface conduit thru-wiring
- One-piece injection molded refractor for even light distribution and low glare
- Available with standard acrylic or optional vandal-resistant polycarbonate refractor
- Lamp included
- IES Type V square distribution
- Vertical lamp reduces "hot spot" beneath luminaire, even at 8-10ft mounting heights
- UL listed for wet locations
- Dark bronze finish standard, consult factory for optional housing color finishes

### DIMENSIONS



A	B	C	D
14.0"	14.0"	8.125"	4.75"

### ORDERING INFORMATION

Catalog Number	Mounting	Wattage	Voltage	Power Factor	Refractor	Weight	
						lbs.	kg
<b>HIGH PRESSURE SODIUM</b>							
<b>NRG-417S9</b>	Ceiling/Conduit	70	120/277	HPF	Acrylic	17	7.7
<b>NRG-413S8</b>	Ceiling/Conduit	100	Quad	HPF	Acrylic	18	8.2
<b>NRG-414S8</b>	Ceiling/Conduit	150	Quad	HPF	Acrylic	19	8.6
<b>PULSE START METAL HALIDE</b>							
<b>NRG-413H8</b>	Ceiling/Conduit	100	Quad	HPF	Acrylic	18	8.2
<b>NRG-415P8</b>	Ceiling/Conduit	150	Quad	HPF	High Temp. Acrylic	19	8.6

NOTES: To order polycarbonate refractor, add suffix -P (N/A on 175W MH). Consult factory for other lamp sources and wattages.



A HUBBELL LIGHTING, INC. COMPANY

Performance Designed Lighting Products

[www.securitylighting.com](http://www.securitylighting.com)

1085 Johnson Drive • Buffalo Grove, IL 60089 • TOLL-FREE: 800-544-4848 • PHONE: 847-279-0627 • FAX: 847-279-0642