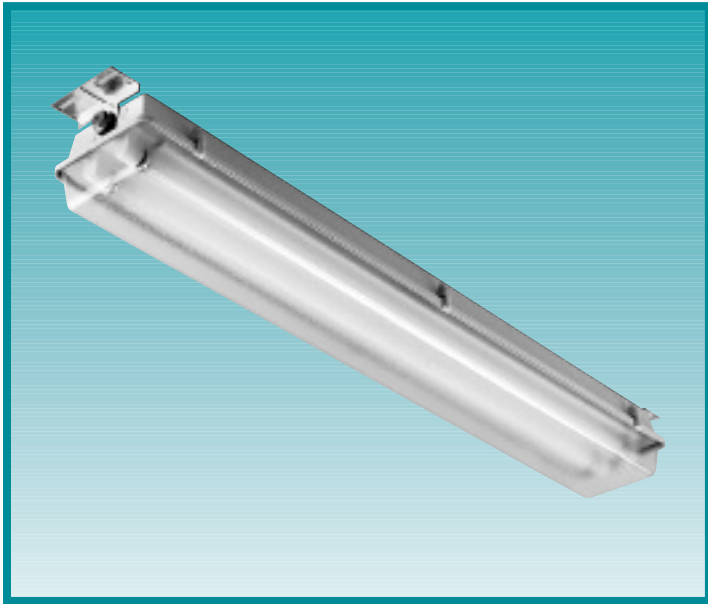


# EG SERIES



Security Lighting's enclosed and gasketed fixture series provides the ultimate in combined quality lighting with resistance to corrosion, weather, dust and moisture. The fiberglass housing and acrylic lens ensure long lasting reliability and can be completely washed down. Ideal for carwashes, laundries, food plants, breweries, kitchens, and parking garages.

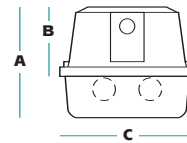


## Fixture Specifications

### FEATURES

- All units can be installed individually or in continuous rows
- Surface mount for use indoors or outdoors
- UL wet location listed
- Compressible closed-cell neoprene gasket bonded to housing for continuous tight seal
- Lens securely fastened with tension clamps
- Lens is high impact acrylic
- Fiberglass housing in white finish

### DIMENSIONS



A	B	C
5.56"	3"	7.56"

### ORDERING INFORMATION

Catalog Number	# of Lamps	Temp		Ballast Type	Nominal Length
		T12	T8		
<b>EG-248HO</b>	2	-20°F		H.O. 800 MA	50"
<b>EG-296HO</b>	2	-20°F		H.O. 800 MA	98"
<b>EG-232-EB</b>	2		0°F	Electronic	50"
<b>EG-432-EB</b>	4		0°F	Electronic	98"

NOTE: • Fixture comes with 120V ballast. Consult factory for availability of other voltages.



A HUBBELL LIGHTING, INC. COMPANY

Performance Designed Lighting Products

[www.securitylighting.com](http://www.securitylighting.com)

1085 Johnson Drive • Buffalo Grove, IL 60089 • TOLL-FREE: 800-544-4848 • PHONE: 847-279-0627 • FAX: 847-279-0642