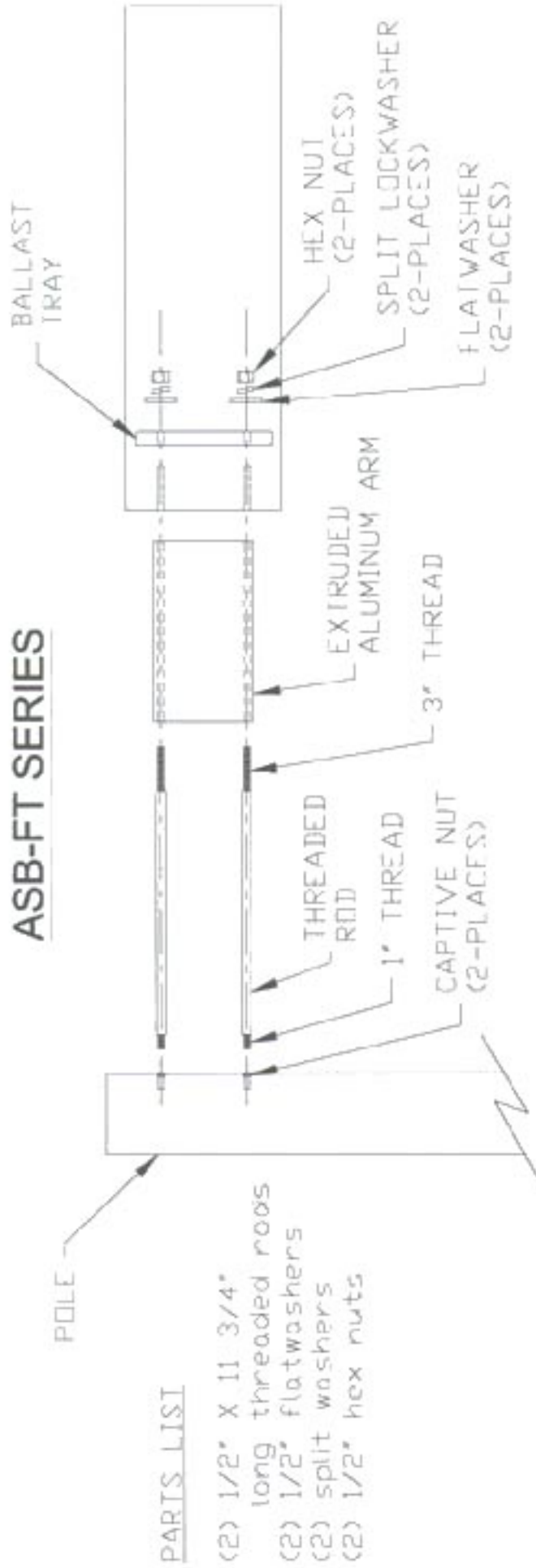


ASB-FT SERIES



PARTS LIST

- (2) 1/2" X 11 3/4" long threaded rods
- (2) 1/2" flatwashers
- (2) split washers
- (2) 1/2" hex nuts

1. **IMPORTANT NOTE:** Install rods (2) with 1" threaded side into pole and TIGHTEN SECURELY.
2. Slip extruded aluminum arm over rods thru carrying channels.
3. Slip fixture over rods.
4. Pull Ballast supply wires through ballast tray prior to setting on rods.
5. Install ballast tray on same rods using the following in order:
 - (1) flatwasher, (1) split lockwasher, (1) hex nut, TIGHTEN SECURELY
 - (1) flatwasher, (1) split lockwasher, (1) hex nut, TIGHTEN SECURELY
6. Make all electrical connections.
7. Close up ballast cover with (2) captive screws. TIGHTEN SECURELY
8. Check to see if lamp is SECURELY TIGHTENED.
9. Close up lens door frame assembly.

PERFORMANCE LIGHTING
 美国灯饰工业集团
 PERFORMANCE LIGHTING

Performance Des gna Lighting Products
 1065 Johnson Dr. Buffalo Grove, Illinois 60089

Phone :847/279-0627 Fax :847/279-0642

CAUTION

Fixture is factory wired for 120 volts.
 If voltage is 277V, 208V, or 240V,
 change spade connection to proper voltage on ballast.