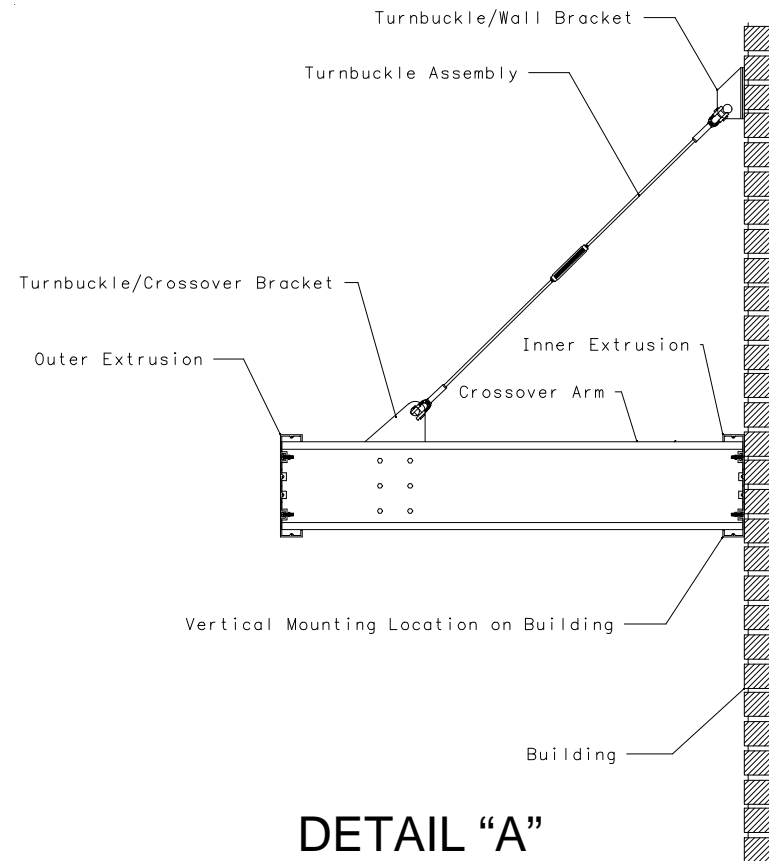
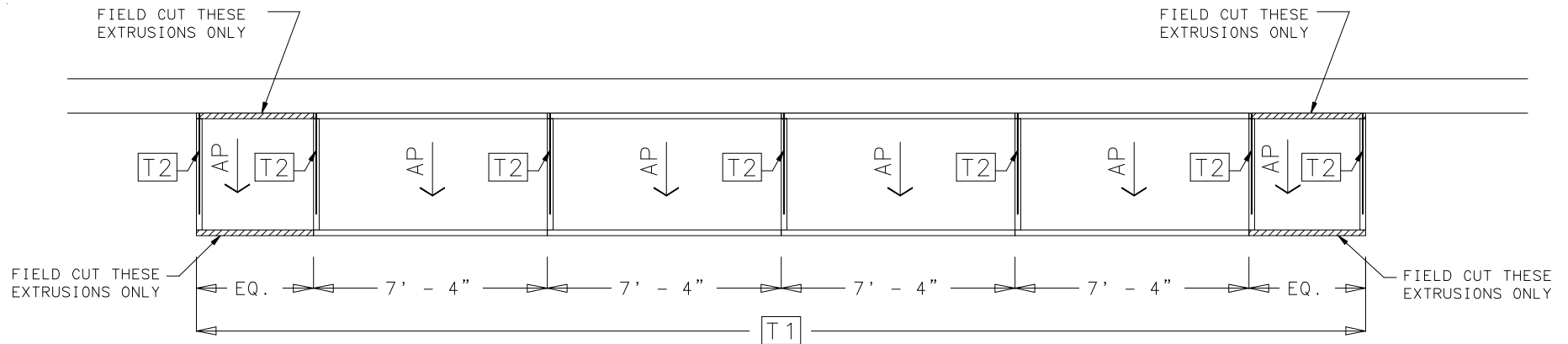


## *Trellis System Installation Instructions*



1. Determine the vertical location of the bottom of the Trellis system on the building and snap a horizontal chalk line at this location (SEE DETAIL A).

2. To find the horizontal starting point, determine the total distance of the desired run on the building and divide that distance by 88 inches. This will give you the number of full sections to install on that run. The remaining distance should be divided by two. This will give you the length of the equidistant sections at each end of the run if needed. The Inner and Outer Extrusions for these equal length sections need to be field cut before proceeding (SEE DETAIL B).



In this example, to find the length of the first and last sections to field cut:

1. The entire assembly scales out on the drawing to be 39' - 0" overall.
2. Convert 39'-0" to inches. ( $39 \times 12 = 468$ ").
3. The quantity of full sections is 4.
4. Multiply the quantity of full sections by 88" ( $4 \times 88 = 352$ ").
5. Subtract the overall length of the full sections (352") from the overall length of the entire assembly (468") ( $468 - 352 = 116$ ").
6. Multiply the answer (116") by .5 ( $116 \times .5 = 58$ ").
7. The length of the equidistant sections at each end is 58".
8. Cut 4 extrusions to a length of 58".

DETAIL "B"

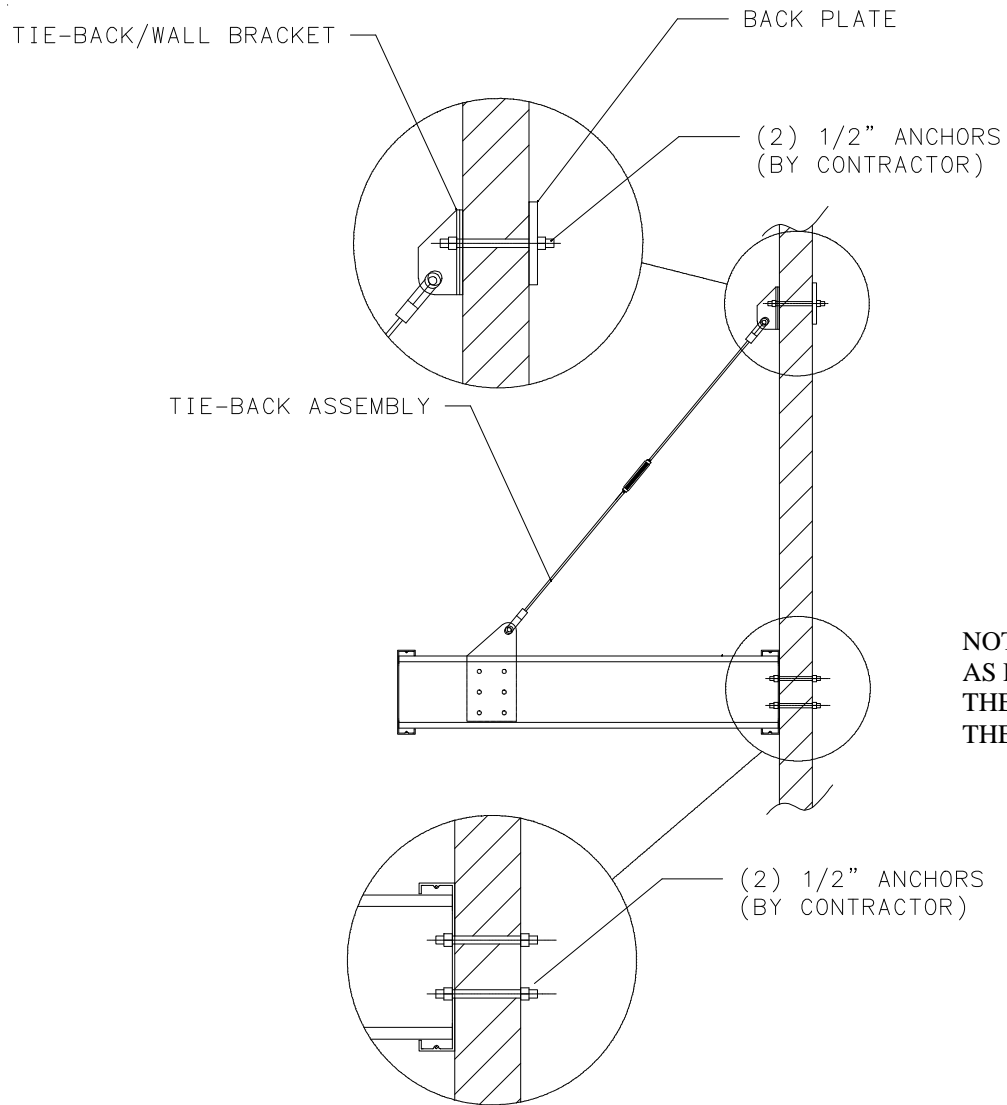
3. Slide four 1/4-20 x 3/4" hex head screws into the top and bottom slots provided on each Extrusion before attaching the extrusion to the building (SEE DETAIL C).

**NOTE: INSTALLING THE SCREWS BEFORE ATTACHING THE EXTRUSION TO THE BUILDING IS VERY IMPORTANT!**



DETAIL "C"

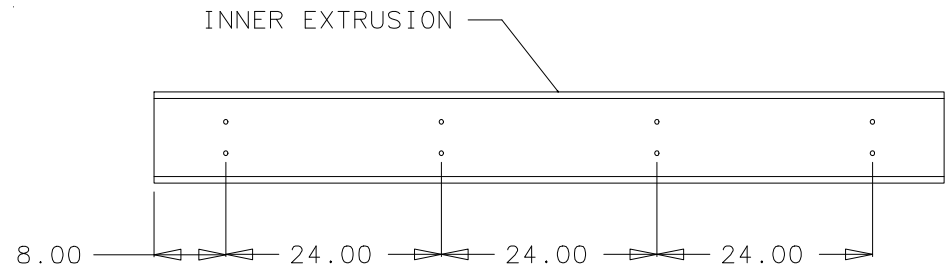
**4. Mount the first Extrusion to building at the desired location by drilling thru the extrusion and the building and attach to the building using fasteners provided by contractor (SEE DETAIL D and DETAIL E). Continue along the building until you reach the end of the run.**



**DETAIL "D"**



**NOTE: USE THESE GROOVES AS DRILL GUIDES TO MARK THE VERTICAL LOCATIONS OF THE ANCHORS**



**DETAIL "E"**

5. Install the Gusset Brackets to the Inner Extrusions using the fasteners previously installed on the extrusions and attach with 1/4-20 hex nuts provided (DO NOT TIGHTEN FULLY AT THIS POINT) (SEE DETAIL F).



DETAIL "F"

6. Attach Crossover Arm to the Gusset Brackets using 1/4-20 x 3/4" long Hex head screws for the gusset bracket at each end and 1/4-20 x 3 1/2" long for the remaining gusset brackets. Secure using 1/4-20 hex nuts provided. Note: Each Crossover Arm is mounted to 2 Gusset Brackets with the exception of the Crossover Arms at either end. hex nuts provided and tighten securely. Making sure the open side of the crossover arms are as illustrated (SEE DETAIL G AND H). Do not tighten fully at this point.



DETAIL "G"



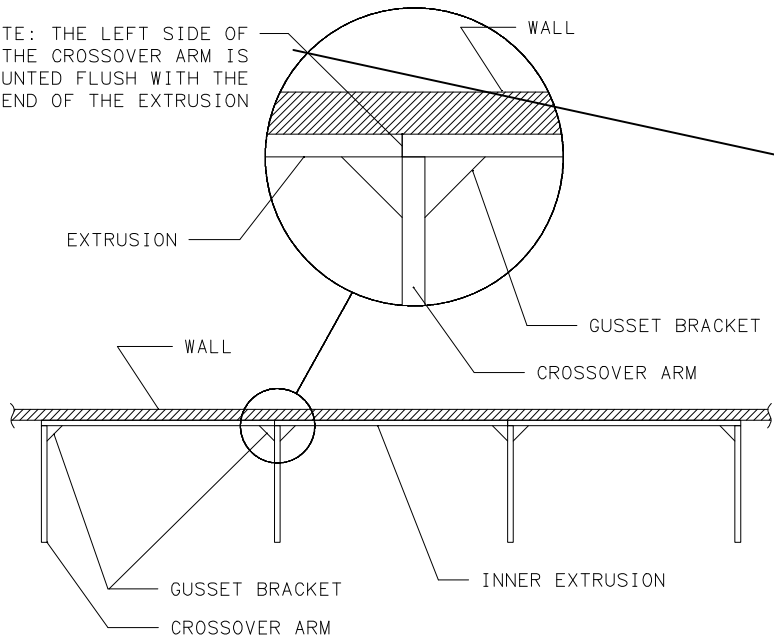
DETAIL "H"

7. Slide the Crossover Arms to their desired locations on the Inner Extrusion and tighten all 1/4-20 Hex Nuts securely (SEE DETAIL I and J).

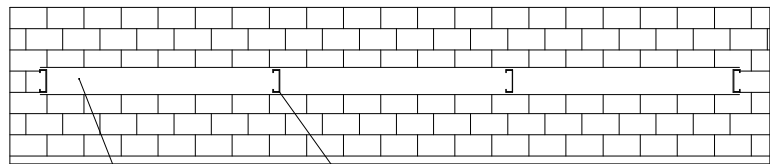


DETAIL "I"

PLEASE NOTE: THE LEFT SIDE OF THE CROSSOVER ARM IS MOUNTED FLUSH WITH THE END OF THE EXTRUSION



TOP VIEW



INNER EXTRUSION

CROSSOVER ARM  
 please note: all crossover arms are mounted with the open side of the Crossover Arms to the left with the exception of the last Crossover Arm on the right

FRONT VIEW

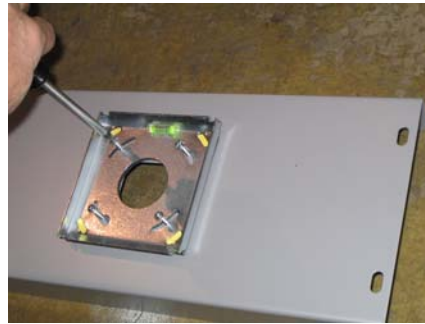


DETAIL "J"

8. To install the wall sconces, remove the mounting plate from the rear of the wall sconce (SEE ILLUSTRATION 1).
9. Attach the mounting plate to the provided extension bracket side with the square hole (SEE ILLUSTRATION 2).
10. Mount the other half of the extension bracket at the desired location of the wall sconce on the inside surface of the extrusion (SEE ILLUSTRATION 3).
11. Attach the half of the extension bracket with the mounting plate attached to the other half of the extension bracket mounted to the extrusion using screws provided and bring wiring thru (SEE ILLUSTRATION 4).
12. Make necessary electrical connections and re-attach fixture to the mounting plate (SEE ILLUSTRATION 5).



**ILLUSTRATION 1**



**ILLUSTRATION 2**



**ILLUSTRATION 3**



**ILLUSTRATION 4**



**ILLUSTRATION 5**

**PLEASE NOTE:  
WALL SCONCES MUST BE  
INSTALLED BEFORE  
INSTALLING EXTRUSION  
COVERS!**

**13. Install extrusion covers and gusset bracket covers where required (SEE DETAIL K).**



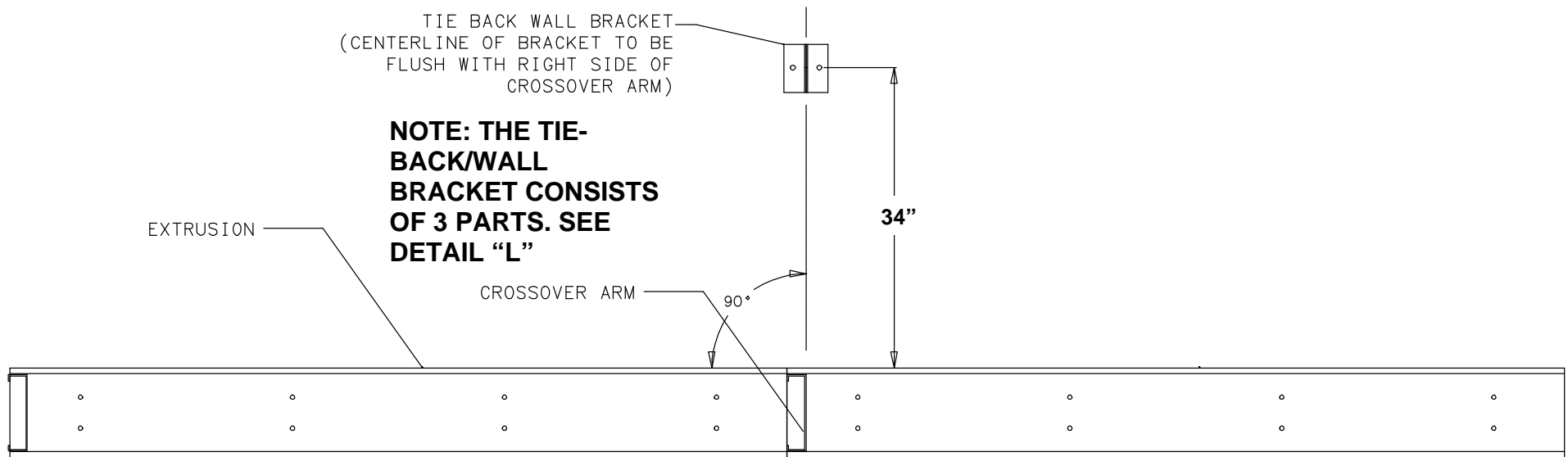
PLACE THE BOTTOM SIDE OF THE COVER INTO THE EXTRUSION AS SHOWN AND ROTATE THE TOP EDGE INTO THE UPPER SIDE OF THE EXTRUSION AND SNAP IN BY LIGHTLY IMPACTING THE COVER WITH A SOFT MALLET (**NOTE: COVERS ARE TO BE INSTALLED ON THE EXTRUSION THAT IS MOUNTED TO THE BUILDING ONLY!**)



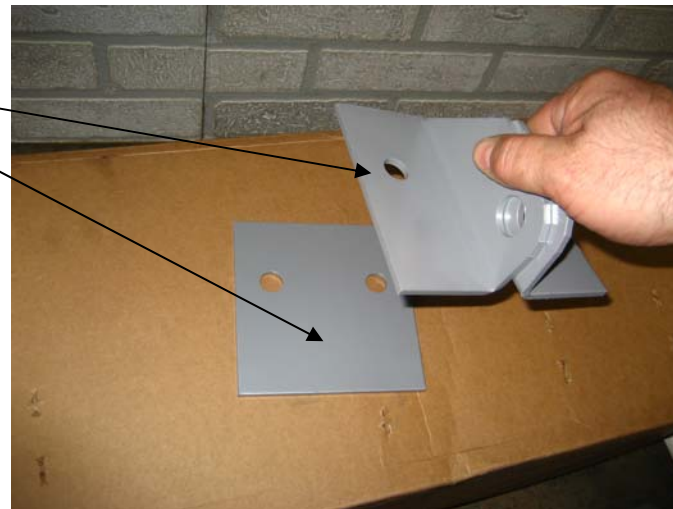
FOR THE GUSSET BRACKET COVERS, SLIDE THE BOTTOM END OF THE COVER UNDER THE GUSSET BRACKET AND ALLOW THE TAB TO FIT INTO THE SLOT ON THE GUSSET BRACKET. USING A SCREWDRIVER, FORCE THE UPPER END OF THE COVER OVER THE TOP OF THE GUSSET BRACKET UNTIL THE TAP SLIPS INTO THE SLOT AT THE TOP OF THE GUSSET BRACKET.

**DETAIL "K"**

14. On the building just above the Inner Extrusions, mark the location of the side of each Crossover Arm requiring a Tie-back Assembly and draw a vertical line on the building perpendicular to the top of the Inner Extrusion. Draw a horizontal line 34 inches from the top of the Inner Extrusion. This is the location of the Turnbuckle/Wall Bracket. Place the Back Plate of the Tie-back/Wall Bracket at this location as shown and drill into the building using the holes on the Back Plate as a template. Attach the Turnbuckle/Wall Bracket using fasteners provided by contractor (SEE DETAIL D and L).



TIE-BACK/WALL BRACKET CONSISTS OF THE THREE PARTS SHOWN – THIS IS NOT INCLUDING THE BACK UP PLATE BEHIND THE WALL



DETAIL "L"

- 15. Attach the Tie-back/Crossover Brackets to the Crossover Arms using (4) ¼-20 x ¾” long screws and hex nuts provided and tighten securely (SEE DETAIL M).**



DETAIL "M"

**16. Attach Gusset Bracket to the outer ends of the Crossover Arms (do not fully tighten at this time)(SEE DETAIL N AND O).**



**DETAIL "N"**



**DETAIL "O"**

**17. Slide the appropriate amount of 1/4-20 x 3/4" long screws into the tracks provided on the outer extrusions and mount the Outer Extrusions to the Outer Gusset Brackets and tighten all fasteners securely once adjusted to the exact location (SEE DETAIL P).**



**DETAIL "P"**

**18. Continue along the run until you reach the end of the run (SEE DETAIL Q).**

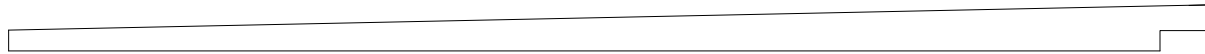


**DETAIL "Q"**

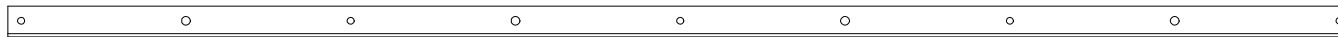
**19. Assemble the infill panels as illustrated on the following pages.**



**INFILL PANEL SIDE BRACKET**



**INFILL PANEL REAR BRACKET**



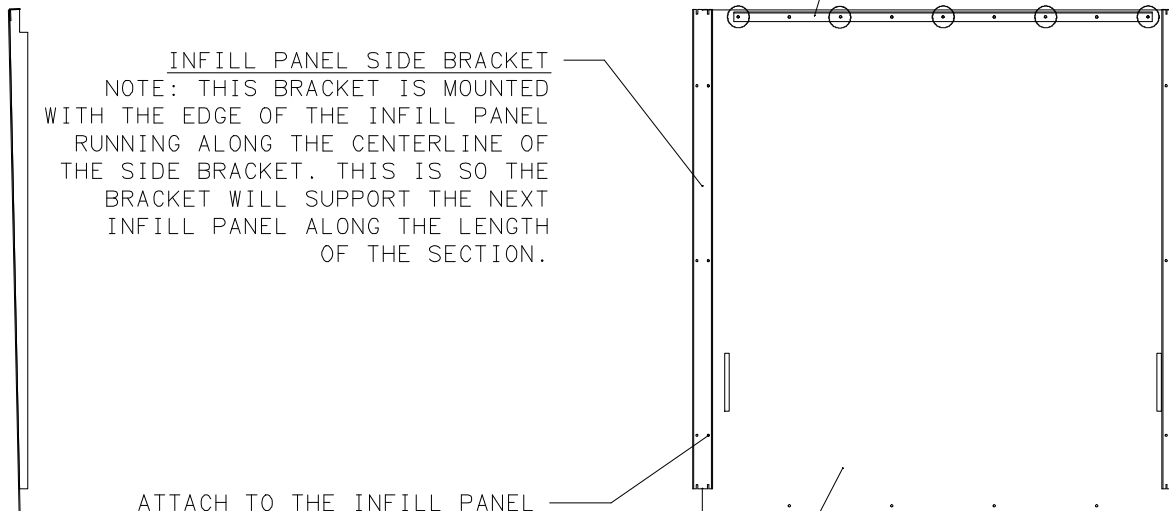
INFILL REAR BRACKET  
ATTACH TO INFILL PANEL  
USING (5) 10-24 x 1/2" HEX  
HEAD SCREWS AND 10-24  
HEX NUTS PROVIDED  
NOTE: INSERT SCREWS ONLY THRU  
THE HOLES SHOWN.

INFILL PANEL SIDE BRACKET  
NOTE: THIS BRACKET IS MOUNTED  
WITH THE EDGE OF THE INFILL PANEL  
RUNNING ALONG THE CENTERLINE OF  
THE SIDE BRACKET. THIS IS SO THE  
BRACKET WILL SUPPORT THE NEXT  
INFILL PANEL ALONG THE LENGTH  
OF THE SECTION.

THIS EXTRA SIDE BRACKET IS  
ONLY NEEDED AT THE  
BEGINNING OF THE SECTION  
NOTE: THE BRACKET IS  
ATTACHED TO THE INFILL  
PANEL FLUSH WITH THE EDGE.  
THIS IS ALSO THE CASE AT  
THE END OF THE SECTION.

ATTACH TO THE INFILL PANEL  
USING (3) 10-24 x 1/2" HEX  
HEAD SCREWS AND #10-24 HEX  
NUTS PROVIDED

INFILL PANEL (SHOWN UP SIDE DOWN)





**20. Install Infill panels as illustrated and attach using #12 x 3/4" long self drilling screws for the building side of the infill panels and #12 x 1 1/2" long self drilling screws for the outer side of the infill panels (SEE DETAIL R).**

**Slip panel over beginning of section**



**Slip second panel onto section**



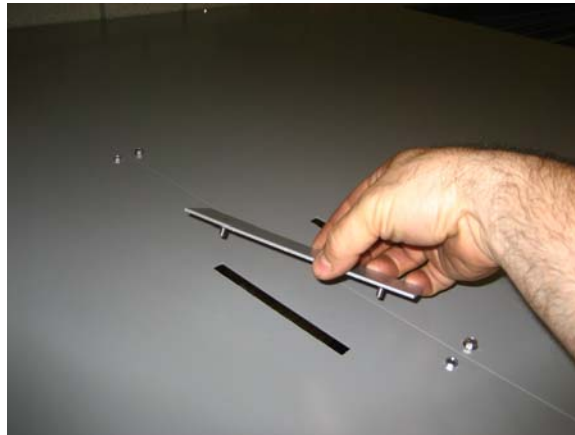
**Attach at the outer end as shown**



**Attach at the building side as shown**



**Insert slot covers as shown and attach using 10-32 hex nuts provided**



**Section completed**



**DETAIL "R"**

**21. Attach end of turnbuckle assembly to the Tie-back/Wall brackets and to the rotate the Tie-back/Crossover brackets. Rotate the turnbuckle until the Crossover Arm is Level (SEE DETAIL S).**



**DETAIL "S"**

22. Slide an End Panel Trim onto each end of the run and attach using four #4 x 1/2" long thread cutting screws provided (SEE DETAL T).



DETAIL "T"

23. To install the "T3" sections, simply repeat STEP #1 attach the extrusion to the wall so the open side of the extrusion is facing you. Attach to building by drilling thru the extrusion and the building and attach to the building using fasteners provided by contractor (SEE DETAIL E and U). Cover the open side of the "T3" sections using the Covers provided. Cover the ends of the "T3" runs with the End Cap Trims using (2) #6 x 1/2" long thread cutting screws provided.



DETAIL "U"

# ENTRANCE DOOR TIE-BACK INSTALLATION INSTRUCTIONS

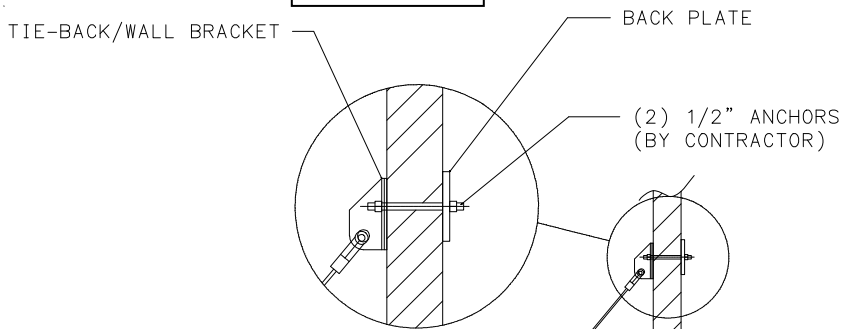
1. SLIDE TIE-BACK BRACKET PROVIDED INTO SLOT ON THE INFILL PANEL AND ATTACH USING SCREWS AND NUTS PROVIDED (SEE DETAIL A).
2. REPEAT STEP ONE FOR THE OPPOSITE SIDE OF THE SECTION (SEE DETAIL B).
3. MOUNT WALL BRACKETS TO WALL ALONG THE SAME CENTERLINE AS THE TIEBACK BRACKET AND AT HEIGHT ABOVE THE TRELIS SECTION AS NOTED IN DETAILS C & D. ANCHORS PROVIDED BY CONTRACTOR.
4. ATTACH TURNBUCKLE RODS TO BOTH BRACKETS AND LEVEL AS NECESSARY (SEE DETAIL F).



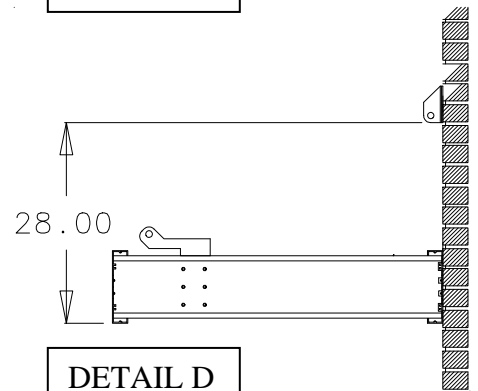
DETAIL A



DETAIL B



DETAIL C



DETAIL D



DETAIL E



DETAIL F